



54 Windermere Crescent

Worthing, BN12 6LB

Offers in the region of £500,000



3



1



1



D

## 54 Windermere Crescent

Worthing, BN12 6LB

James & James Estate Agents are delighted to bring to the market this beautifully presented and deceptively spacious three double bedroom detached bungalow in a favoured residential area of Goring-by-Sea.

In brief the accommodation comprises entrance hall, feature south facing lounge/diner, three double bedrooms, luxury fitted shower room, luxury fitted kitchen, good size garage with storage at the rear. Other benefits include gas central heating, double glazing, and is presented throughout to a very high standard, and has been well maintained by the current owners.

Situated in Windermere Crescent, local shopping facilities are nearby along with local bus routes. The nearest mainline railway station is Durrington-on-Sea, which provides access to Worthing town centre, Brighton & Hove, London Victoria, Chichester, Southampton and beyond.

In our opinion internal viewing is considered essential to appreciate the overall size and condition of this beautifully presented bungalow.

Council Tax Band D

[Entrance porch](#)

[Entrance hall](#)

[Shower room](#)  
8'6 x 5'6 (2.59m x 1.68m)

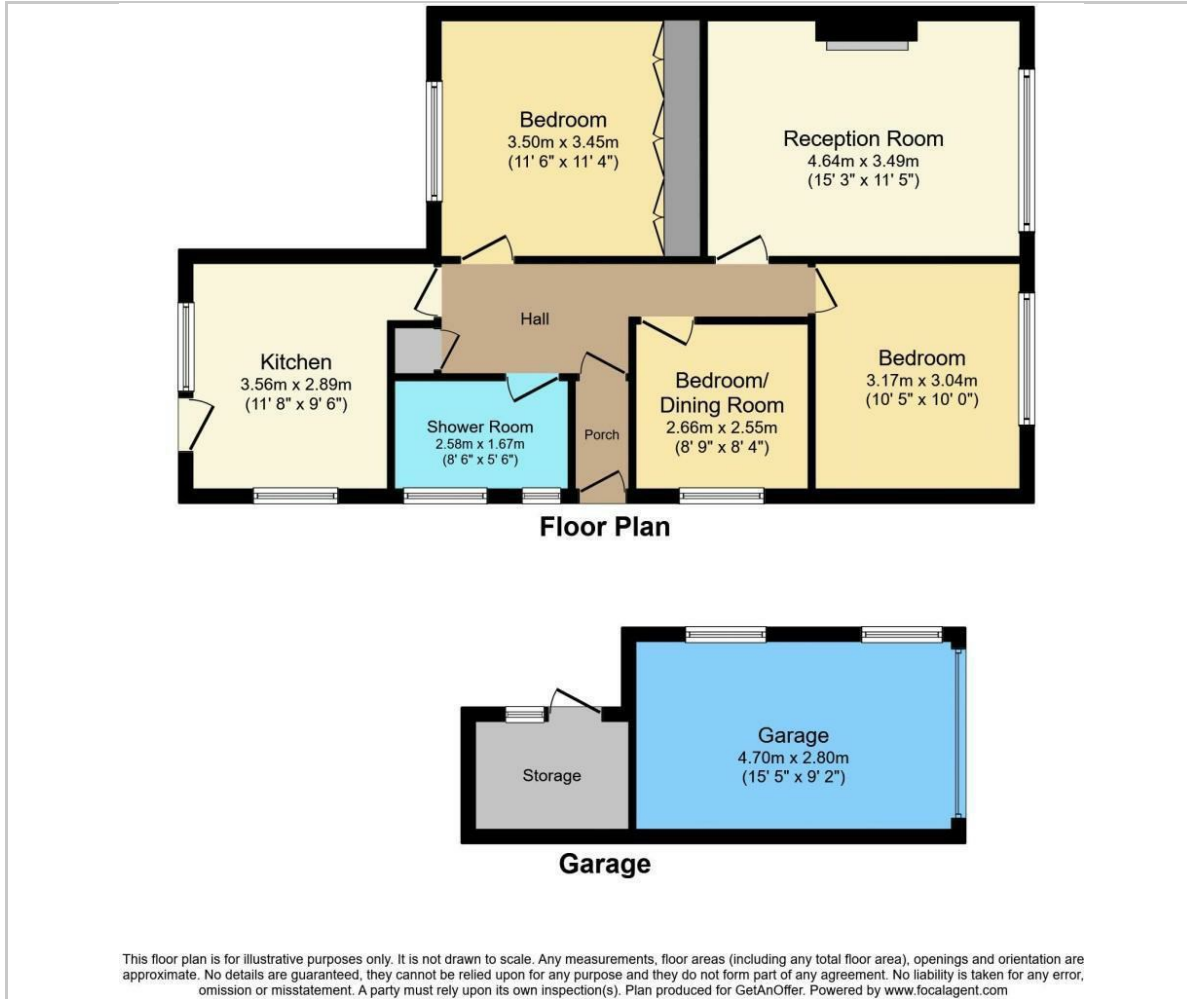




- Kitchen  
11'8 x 9'6 (3.56m x 2.90m)
- Bedroom 1  
11'6 x 11'4 (3.51m x 3.45m)
- Lounge  
15'3 x 11'5 (4.65m x 3.48m)
- Bedroom 2  
10'5 x 10'0 (3.18m x 3.05m)
- Dining room/Bedroom 3  
8'9 x 8'4 (2.67m x 2.54m)
- Ample Off Road Parking
- Garage
- Stunning Garden



## Floor Plan



## Viewing

Please contact our Worthing Office on 01903 958770 if you wish to arrange a viewing appointment for this property or require further information.

These particulars, whilst believed to be accurate are set out as a general outline only for guidance and do not constitute any part of an offer or contract. Intending purchasers should not rely on them as statements of representation of fact, but must satisfy themselves by inspection or otherwise as to their accuracy. No person in this firm's employment has the authority to make or give any representation or warranty in respect of the property.

## Area Map



## Energy Efficiency Graph

